

Penguin Rescue Rehabilitation 2013/14



Hiltrun Ratz

Rehabilitated Yellow-eyed penguins from North Otago

	Total	Proportion of total	Dead	Release rate
adults	25	25%	1	96%
juveniles	38	36%	2	95%
pre-fledging chicks	36	34%	3	92%
post-fledging chicks	6	6%	1	83%
total	105		7	93%

Where were the penguins picked up?

Total (adults, juveniles, post-fledging chicks)	69
Origins in areas used by breeding pairs:	31 (45%)
Origins in areas outside:	38 (55%)

Conclusions:

penguins need beach walking volunteers

Timing: checking beaches until end May

Released Yellow-eyed penguins from North Otago

Average number of days: **27**

Range: **5 - 72**

Average cost per penguin: **\$ 135**

Includes only food, medication and a transponder

Expense $\$135 * 98 = \$ 13\ 230$

Other costs (estimates include depreciation)

Transport 38 penguins @ \$40 \$ 1500

Electricity and freezer \$ 1000

Fencing \$ 1000

Sundry \$ 500

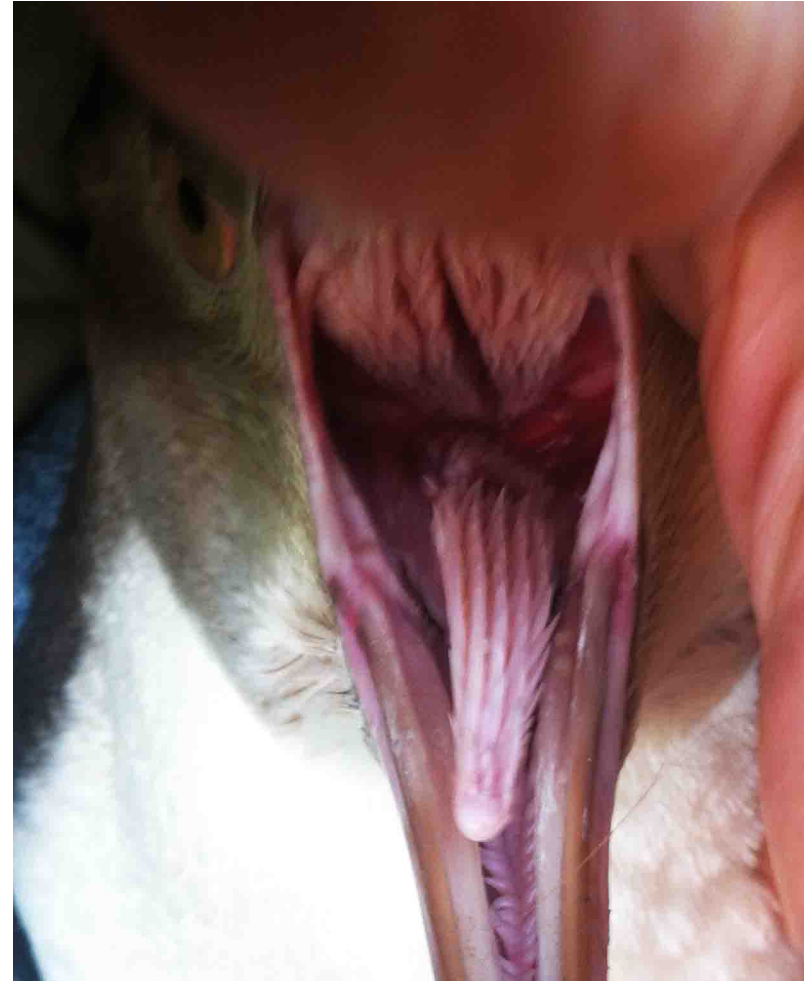
Subtotal of other costs **\$ 4000**

Why was it such a terrible year

Previous seasons: eye and foot injuries

This season: fewer eye injuries,
some foot injuries

Most penguins had
fungal throat infections



Method: soft release

in hospital no handling is required



Penguin transfer into the colony to the soft release pens:



where penguins are offered food
without being handled



Gates are opened after one week

